

Universal Dream Services

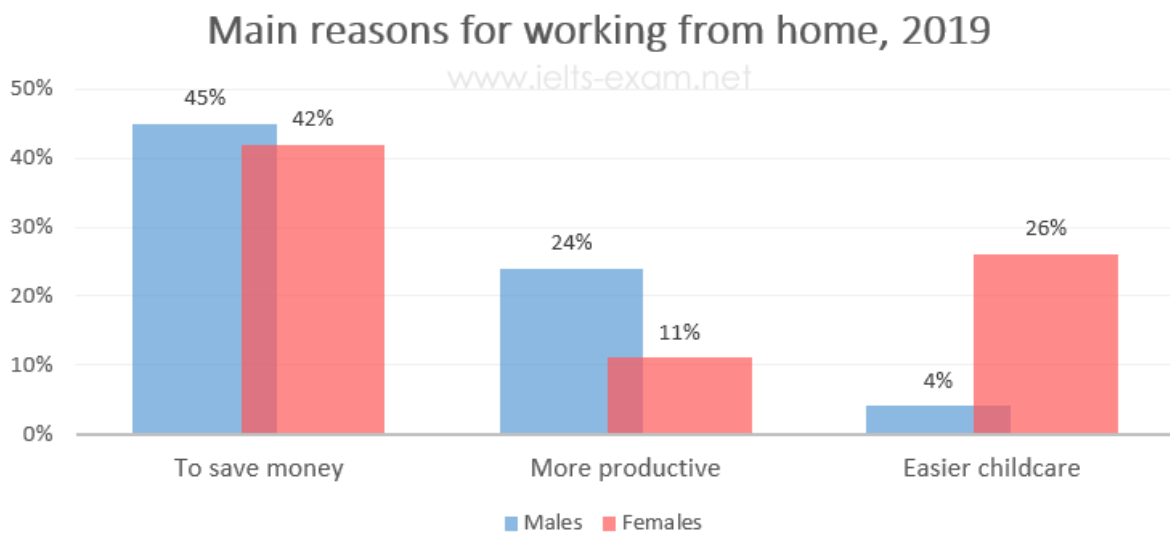
IELTS ACADEMIC WRITING TASK 1

1. You should spend about 20 minutes on this task.

The diagrams below show the main reasons workers chose to work from home and the hours males and females worked at home for the year 2019.

Summarise the information by selecting and reporting the main features, and make comparisons where relevant.

Write at least 150 words.



Hours worked from home, 2019		
Hours of work per week	Males	Females
Under 10	3%	74%
10 to 30	16%	22%
Over 30	81%	6%

2. Identifying and comparing data on a chart

Some texts include statistics and data in graphical form. To understand this information, first identify:

- the title of the chart
- the title of each axis (horizontal and vertical)
- the label of each category, represented by a column, row or line in the chart
- the units of measurement for each axis (e.g. time, numbers, percentages, distances)

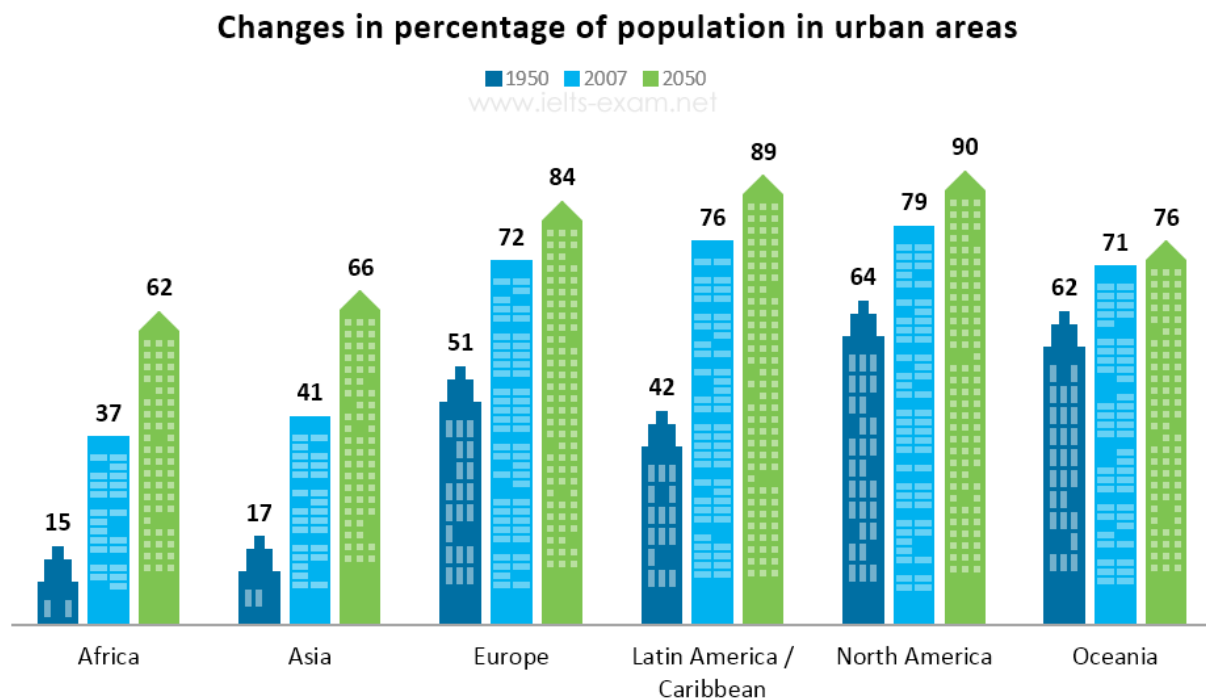
- the values for each category
- the legend (the colour or pattern assigned to each category in the chart)

You should spend about 20 minutes on this task.

The bar chart below gives information about the percentage of the population living in urban areas in different parts of the world.

Summarise the information by selecting and reporting the main features, and make comparisons where relevant.

Write at least 150 words.



3. IELTS Writing Task 1: Describing a Process or an Object

Although interpreting and presenting data is the most common task type for Task 1 of the Writing module, two other tasks are possible. In one, you are given a diagram and asked to describe a process or to explain how something works. In the other, you have to describe an object or a series of events.

You might be required to describe an object and how it works or describe and compare two or more objects. This type of task is less common.

You should spend about 20 minutes on this task.

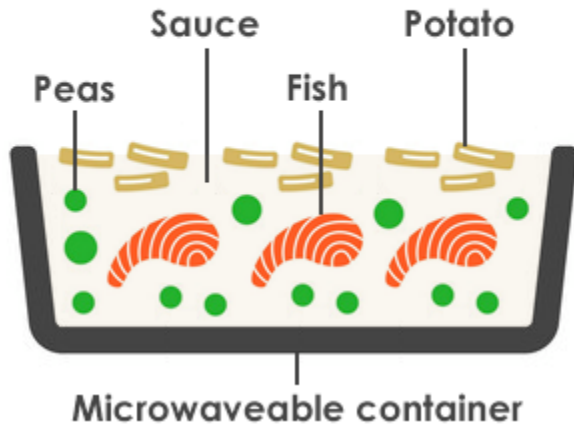
The diagrams below give information about the manufacture of frozen fish pies.

Summarise the information by selecting and reporting the main features, and make comparisons where relevant.

Write at least 150 words.

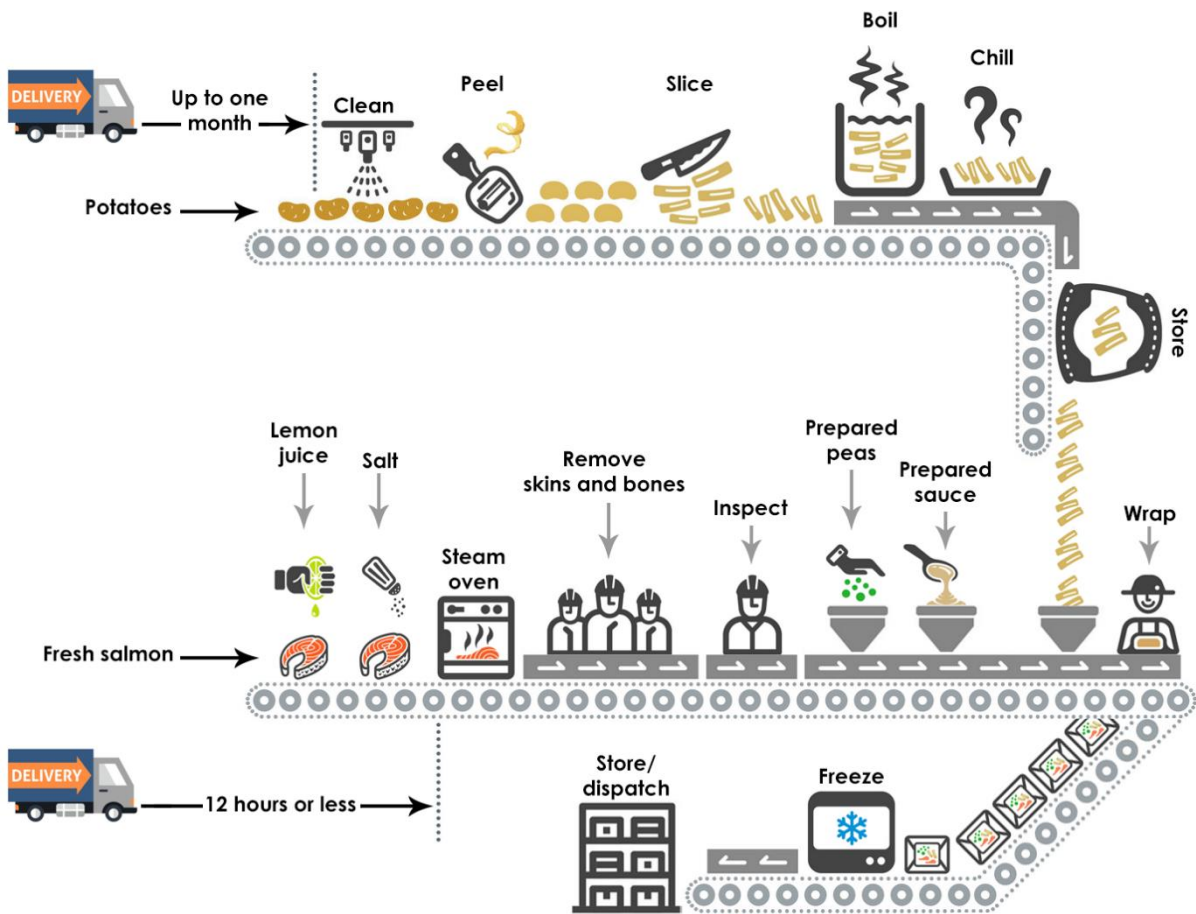
A fish pie

www.ielts-exam.net



Fish pie production line

www.ielts-exam.net



4. Writing about graphs

When writing about graphs, look at the visual information overall without focusing on the details. You will usually be able to identify three or four main trends or patterns. Circle or draw arrows on the graph to highlight the key features and patterns. Consider: upward and downward movements, highest and lowest points and the start and end points for the range of information shown. Identifying key trends will help you structure your writing.

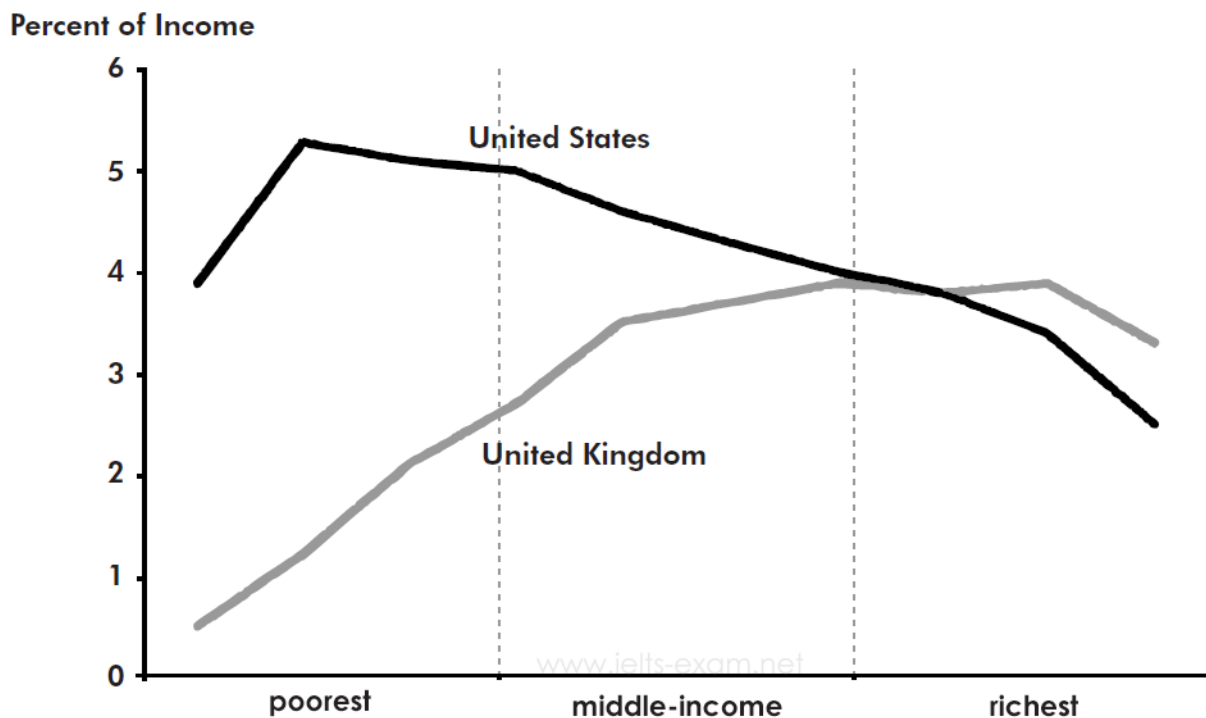
You should spend about 20 minutes on this task.

The graph below gives information about how much people in the United States and the United Kingdom spend on fuel.

Summarise the information by selecting and reporting the main features, and make comparisons where relevant.

Write at least 150 words.

How much do people spend on fuel?



Source: Smith 1992. Chermick and Reschovsky 1997.

5. You should spend about 20 minutes on this task.

The table below shows the results of surveys in 2005, 2010 and 2015 about McGill University.

Summarise the information by selecting and reporting the main features, and make comparisons where relevant.

Write at least 150 words.

www.ielts-exam.net	2005	2010	2015
Teaching quality	74	72	78
Library resources	86	88	87
Student services	54	81	95
Range of modules offered	39	31	25
Sports and social facilities	65	65	65

6. IELTS Tip

If you are presented with two figures which appear to show a cause and effect relationship, it is helpful to take note of this. It will enable you to highlight the information more effectively. However, you should be cautious about expressing a cause and effect relationship too directly. This is because IELTS Writing Task 1 does not ask you to interpret the graph or refer to anything outside of it. If you use a cause and effect expression (e.g. *causes, leads to*), use a hedging expression to make the claim less sweeping (e.g. *appears to cause, may lead to*).

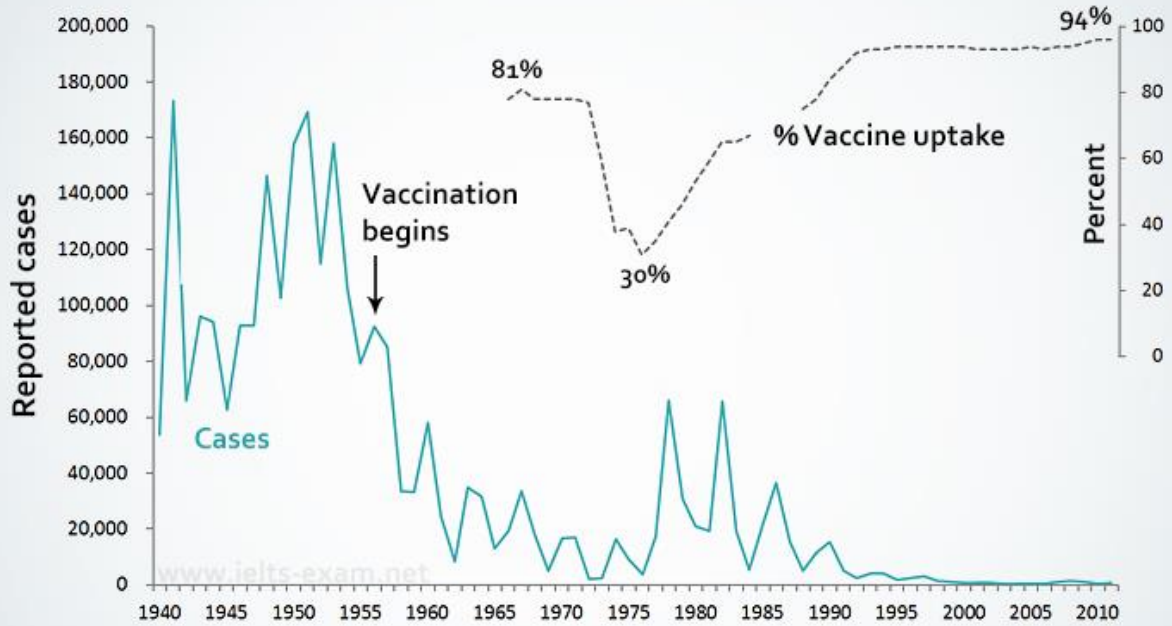
You should spend about 20 minutes on this task.

The graph shows the impact of vaccinations on the incidence of whooping cough, a childhood illness, between 1940 and 1990 in Britain.

Summarise the information by selecting and reporting the main features, and make comparisons where relevant.

Write at least 150 words.

Cases of whooping cough (Britain) 1940-1990



Data source: Public Health England, Pertussis notifications and deaths, England and Wales, 1940-2013 (http://webarchive.nationalarchives.gov.uk/20140505192926/http://www.hpa.org.uk/webc/HPAwebFile/HPAweb_C/1317133571994)